

# ***RCBS***®

## **SUMMIT™ RELOADING PRESS**



### **PRODUCT INSTRUCTIONS**



## **WARNING!**

Before using this product, read and follow these instructions carefully. Failure to do so could result in serious injury or death, or property damage.

**If you have any questions while assembling or operating this product,  
call us at 1-800-533-5000 or 1-530-533-5191**

**Monday – Thursday 6:30 a.m. – 4:00 p.m. Pacific Time.**

**Or email us at [rcbs.tech@atk.com](mailto:rcbs.tech@atk.com).**

This manual contains important safety and operating information. Keep this as a permanent part of your reloading equipment. If lost, contact us for a replacement.

## **RELOADING SAFETY**

**NOTICE - This manual is not intended to provide comprehensive instructions or safety information on how to reload, or handle or use reloading components. Always read and thoroughly understand a reloading manual before attempting to reload ammunition.**

Reloading is an enjoyable and rewarding hobby when conducted safely. But, as with many hobbies, carelessness or negligence can make reloading hazardous. When reloading, always follow these safety guidelines to minimize the risk of personal injury or death.

- Always wear safety glasses.
- Understand what you are doing and why. Read handbooks and manuals on reloading. Talk to experienced reloaders. Write or call suppliers of equipment or components if you have questions or are in doubt.
- Read and understand all warnings and instructions accompanying your equipment and components. If you do not have written instructions, request a copy from the manufacturer. Keep instructions for future reference.
- Don't rush or take short cuts. Establish a routine and follow it at a leisurely pace.
- Keep complete records of reloads. Label each box showing the date produced, and the type of primer, powder and bullet used.
- Do not smoke while reloading, or reload near sources of heat, sparks or flame.
- Observe good housekeeping in the reloading area. Keep tools and components neat, clean and orderly. Promptly and completely clean up any spills.
- Keep all reloading equipment and components out of reach of children.
- Stay alert. Reload only when you can give your undivided attention. Do not reload when tired, ill, rushed or under the influence of drugs or alcohol.

Because RCBS has no control over the choice, assembly or use of components or other reloading equipment, RCBS assumes no liability, express or implied, for the use of ammunition reloaded with this product.

## **LOADING DATA**

Use only laboratory tested reloading data. We highly recommend the current SPEER Reloading Manual.

**▲ OBSERVE ALL WARNINGS ABOUT THE USE OF MAXIMUM LISTED LOADS.**

## **WORKING WITH CARTRIDGE CASES**

**▲ WARNING!** Do not attempt to resize a primed case with decapping pin installed.

- Examine empty cases to be sure they are in good condition before reloading. Thin, split, deformed, or badly corroded or pitted cases may be structurally weak, and result in a dangerous condition. Pay particular attention to splits in the mouth, separation between the case and the head, and dents in the shoulder.
- Do not store cartridge cases or ammunition near harsh chemicals such as gasoline, household cleaners, or cat urine. The fumes can weaken the metal and present a dangerous condition.

- Do not clean cases with chemicals other than those specifically designed for the purpose.
- Do not attempt to clean loaded ammunition or primed cases. Doing so can cause corrosion, and weaken the case, or cause a misfire/ hangfire condition.
- Ensure cases have proper primer pocket sizes; remove primer staking/crimp if necessary. Attempting to seat a primer into an undersized pocket or pocket with staking/crimping can result in detonation.
- Do not ream out or enlarge flash holes of cartridge cases. This may change the ignition rate and result in dangerous pressures.
- Resize and trim fired cases to ensure reliable chambering and obtain proper bullet tension and crimp.
- Never attempt to guess at the identity of your ammunition.

### **CASE TRIMMING/ PREP**

**▲WARNING!** It is critical for safety that cases not exceed the maximum specified case length. A case that is too long can enter the throat of the firearm when chambered. If this happens, the case cannot release the bullet properly upon firing, resulting in excessive pressure increase and create a dangerous condition.

### **MACHINERY**

**▲WARNING!** Avoid wearing loose clothing and jewelry which can be drawn into moving/rotating components.

- Keep your hands and fingers away from “danger” spots and pinch-points where they might be injured.
- Keep children and others away from machinery.
- Be sure that all moving parts are shielded and all guards are in place before operating any equipment.

### **GUNPOWDER WARNINGS**

**▲WARNING!** Keep out of reach of children.

- Store powders in their original package in a cool, dry environment free from wide temperature variations.
- Keep cans tightly sealed and labels intact.
- Mark date of purchase on can, for future reference. Use older stock first.
- Never use glass as a storage container. This may cause a “greenhouse effect” raising temperature in container and degrade the powder.
- Check cans and powder for signs of degradation. Many powders will exhibit a fine red-brown dust on the granules and/ or inside the container when this happens. If it does, do not use propellant; dispose of it properly in compliance with local regulations.
- DO NOT have more than one can of powder on the bench at one time. Powder cans should be stored away from the bench to avoid picking up the wrong one.
- DO NOT use any powder unless its identity is positively known. The only positive identification is the manufacturer’s label on the original canister. Discard all mixed powders and those of uncertain identity.
- If you use a powder measure, replace the lids on both the powder hopper and powder can after the powder hopper has been filled.
- When using a powder measure, settle the powder in the powder hopper before charging any cases. Throw and check the weight of at least ten (10) charges. This will assure you that the correct powder charge is being thrown.
- When you finish a reloading session, pour any remaining powder back into its original factory container. This will preserve the identity and shelf life of the powder.
- DO NOT smoke while reloading.

## **RCBS® LIMITED LIFETIME WARRANTY**

Your RCBS Summit™ Reloading Press is warranted to be free from defects in material or workmanship for as long as the original owner owns it. This warranty is extended only to the original consumer purchaser. All RCBS products are intended for non-commercial use by hobbyists. Any other use of these products will void the warranty. If you believe that your product is covered by this warranty, you must return the product to RCBS at the address below, postage paid, with proof of purchase for evaluation. If covered, we will (at our sole option) repair, replace or refund the purchase price of any part or product found to be defective. This remedy will be without charge except for reasonable shipping, handling and insurance charges. TO ENSURE ACCURACY OF YOUR WARRANTY INFORMATION, SEND YOUR DATED PROOF OF PURCHASE TO THE ADDRESS BELOW.

This limited warranty does not cover defects or damage resulting from carelessness, misuse, commercial use, abuse, neglect, improper installation or assembly, water submersion, unauthorized or improper repair, failure to follow operation instructions, modification or normal wear and tear.

ANY WARRANTIES IMPLIED BY LAW SHALL IN NO EVENT EXTEND BEYOND DURATION OF THIS EXPRESS WARRANTY. Some States do not allow limitations on how long an implied warranty lasts, so the above limitation may not apply to you. REPAIR OR REPLACEMENT AS PROVIDED HEREIN IS YOUR EXCLUSIVE REMEDY FOR ANY DEFECTIVE PRODUCT. IN NO EVENT SHALL WE BE LIABLE FOR ANY SPECIAL, INCIDENTAL OR CONSEQUENTIAL DAMAGES OF ANY KIND ARISING OUT OF THE PURCHASE OR USE OF THIS PRODUCT, WHETHER BASED UPON CONTRACT, TORT, STATUTE OR OTHERWISE. Some states do not allow the exclusion or limitation of incidental or consequential damages, so the above limitation or exclusion may not apply to you. This warranty gives you specific legal rights, and you may also have other rights which vary from State to State.

### **CONTACT US**

RCBS

605 Oro Dam Blvd, Oroville, California 95965

1-800-533-5000

Email: rcbs.tech@atk.com

---

## INTRODUCTION

The Summit Reloading Press moves the die to the case, which allows for a unique open design. Its 4-1/2-inch window opening provides unlimited access to the cartridge case, and a compound leverage linkage system requires less effort while resizing cartridges cases. A 4-1/4-inch stroke length lets reloaders seat bullets in even the longest cartridges. The Summit's Die Plate provides 3 inches of bearing surface on a massive 2-inch-diameter ram, which is guided by the plate's two rear alignment pins. The Die Plate can use quick-change adapters and utilizes a removable 7/8"-14 threaded bushing that allows for the use of a 1"-14 bushing with larger Safari Series dies. All Summit Reloading Press components (except the Primer Catcher) are made of cast iron and steel to provide a lifetime of reloading pleasure. A zerk fitting has been added to the press so the user can lubricate the Die Plate/Ram interface. The press has an ambidextrous handle design and can be mounted flush with the edge of a reloading bench or up to 2-1/2 inches back from the front.

## ACCESSORIES

The Primer Catcher keeps spent primers from dropping to the floor and is easily removed for emptying.

## UNPACKING

Unpack the press carefully and look for the items listed below. Refer to the parts list for identification.

- Press
- Handle/Ball Assembly
- Parts Bag: Contains Primer Catcher and 2 - 6-32 x 3/8" Button Head Cap Screws

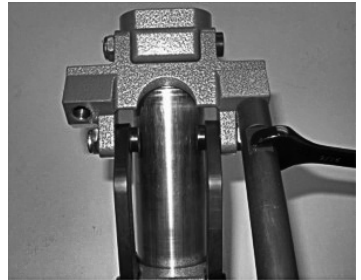
## INSTALLATION

Mount the Summit Reloading Press to a sturdy workbench or table with two 3/8" bolts of sufficient length to penetrate the press base and bench. The Summit Reloading Press may also be mounted to an optional Accessory Base Plate II, #09280, sold separately.

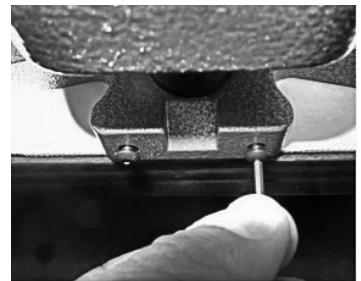
Attach the threaded portion of the handle to either the right or left side of the toggle block and lock down using a 9/16" open end wrench in the flats provided on the handle. See Photo 1.

The handle must remain tight at all times to avoid damage to the handle or toggle block. An optional Short Handle, #09291, is available for bullet seating in the Summit Reloading Press.

Install the 2 - 6-32 x 3/8" Button Head Cap Screws into the two holes in the front of the press base using a 5/64" hex key wrench. Leave approximately 1/16" between the screws and the front of the press base. See Photo 2.



*Photo 1*



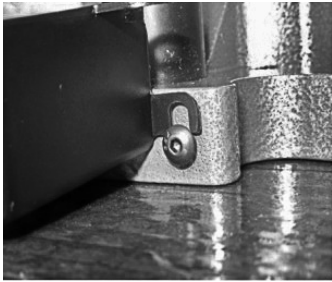
*Photo 2*

If the Summit™ Reloading Press is mounted flush with the front of the bench, slip the larger diameter holes in the Primer Catcher over the head of the Cap Screws and slightly pull the smaller diameter holes over the shank of the Cap Screws. See Photo 3.



*Photo 3*

If the Summit Reloading Press is mounted back from the front edge of the bench, attach the Primer Catcher using the 2 U-shaped connectors. See Photo 4.



*Photo 4*

The Summit Reloading Press Shell Holder Adapter accepts removable type shell holders. To install, insert the shell holder into the Shell Holder Adapter and twist slightly to the left. To remove, twist slightly to the right. See Photo 5.



*Photo 5*

## DIE INSTALLATION

Sizer Die Installation. Thread the sizer die into the bushing in the top of the die plate. See Photo 6.



*Photo 6*

Lower the handle, which will lower the die plate to the shell holder. Thread the die down until it touches the shell holder. See Photo 7.



*Photo 7*

Be sure all of the play is removed from the press linkage system. To do this, raise the handle to raise the die plate to the top of the stroke. Thread the sizer die 1/8 to 1/4 of a turn farther down so the press cams over center. Set the die lock ring and you're ready to size. Refer to the instructions included in your die set for further adjustments.

**Expander Body and Seat Die Installation:** The same steps should be taken when installing an expander body or seat die. The only difference is that you should leave 1/16 to 1/8" gap between the die and the shell holder. See Photo 8.

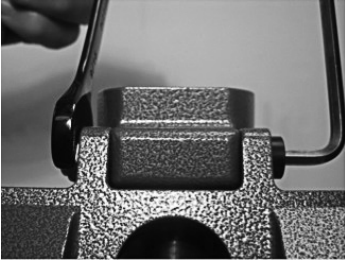


*Photo 8*

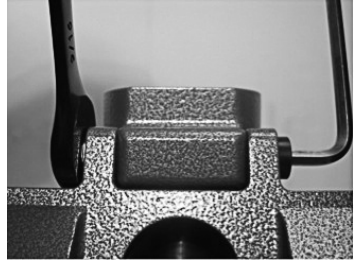
Refer to the instructions included in your die set for further adjustments.

## BULLET SEATING

The Summit™ Reloading Press design is great for seating of bullets in the cartridge case. The open frame design allows excellent accessibility. The optional Short Handle, #09291, and ability to tighten the linkage to reduce the press stroke greatly aids in seating bullets in cartridge cases. To tighten the linkage, insert a 3/16" hex key wrench into the broached end of the toggle pin. Using a 9/16" open end wrench, slightly turn the nyloc nut on the toggle pin from back to forward. See photos 9 and 10.



*Photo 9*



*Photo 10*

Do not over-tighten the nut. Tighten the linkage just enough to allow the handle to stop where desired in the stroke length. See Photo 11.



*Photo 11*

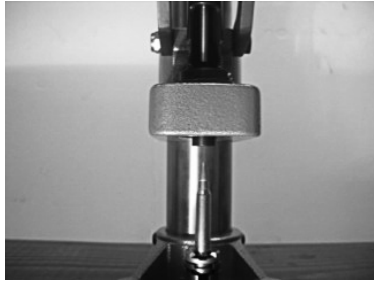
Bullet seating is greatly enhanced with use of the Gold Medal Seat Die (sold separately). See Photo 12.



*Photo 12*



The Gold Medal Seat Die has a bullet retaining system that holds the bullet to free your hands for seating. See Photo 13.



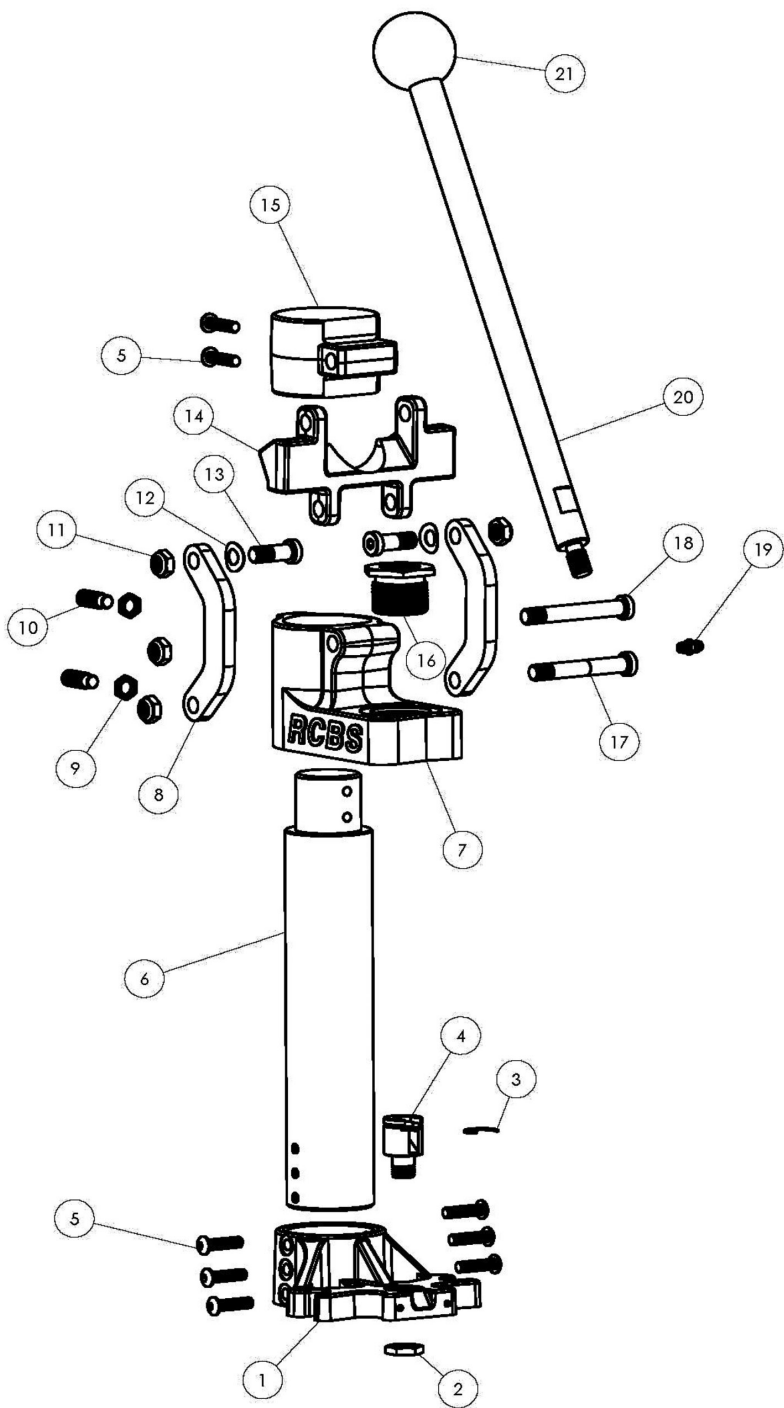
*Photo 13*

## **PRIMING**

The Summit Reloading Press does not provide an in-press priming system. RCBS® recommends using dedicated Priming Tools to accomplish this task.

## **MAINTENANCE**

This press was lubricated at the factory. However, it is necessary to lubricate all moving parts from time to time with gun oil. A zerk fitting has been installed on the right side of the Die Plate to lubricate the Die Plate/ Ram interface. If rust spots appear, swab lightly with gun oil and wipe dry. Care should be taken not to apply oil where it could come in contact with primer pockets or primers. Oil will deactivate primers. It is a good practice to clean the press prior to lubrication to remove grit and other residue. Note the ease with which the epoxy enamel paint wipes clean. This finish is impervious to oil and is extremely chip and fade resistant. RCBS also sells a Press Maintenance Kit, #99971, to accomplish this task.



**SUMMIT™ PRESS PARTS LIST**

ITEM NUMBER	PART NUMBER	DESCRIPTION	QTY.
1	7709205	Base	1
2	7709218	Jam Nut 1/2	1
3	7109112	Clip Spring	1
4	7709214	Shell Holder Adapter	1
5	7109212	1/4-28 x 1 BHCS	8
6	7709209	Ram	1
7	7709206	Die Plate	1
8	7709210	Link	2
9	7709219	Jam Nut 3/8	2
10	7709217	Guide Screw	2
11	7186106	3/8-16 Nyloc Nut	4
12	7109260	Bow Washer 3/8 ID	2
13	7709212	Link Pin	2
14	7709208	Toggle	1
15	7709207	Pivot	1
16	7709138	Press Bushing	1
17	7709213	Ram Pin	1
18	7709211	Toggle Pin	1
19	7109213	Zerk Fitting	1
20	7709215	Handle	1
21	7109121	Handle Ball	1

# **RCBS**<sup>®</sup>

**PRECISIONEERED RELOADING EQUIPMENT**

We think that we make the very best reloading equipment in the world.

If you agree, please tell your friends.

If you disagree, tell us we want to do something about it!

Customer Service

1-800-533-5000 (US or Canada) or 530-533-5191

Hours: Monday - Thursday, 6:30 a.m. - 4:00 p.m. Pacific Time  
(hours may vary)

e-mail: [rcbs.tech@atk.com](mailto:rcbs.tech@atk.com) or visit [rcbs.com](http://rcbs.com)

RCBS 605 Oro Dam Blvd. East, Oroville, CA 95965

Federal Premium<sup>®</sup> Ammunition - RCBS<sup>®</sup> - Alliant Powder - CCI<sup>®</sup>  
Speer<sup>®</sup> Ammo - Speer<sup>®</sup> Bullets - Fusion<sup>®</sup> Ammunition  
Estate<sup>®</sup> Cartridge - Blazer<sup>®</sup> Ammunition - Force on Force<sup>®</sup>  
Weaver<sup>®</sup> - BLACKHAWK!<sup>®</sup> - Champion<sup>®</sup> - Gunslick Pro<sup>®</sup> - Outers<sup>®</sup>  
Buck Commander<sup>®</sup> - Duck Commander<sup>®</sup>

**7200488**